

soffio



Wall heating panels

HEAT DIRECTLY FROM WALLS

Surround your family with comfort from all sides!



Benefits for your house:

unlimited arrangement of interiors • freedom of selection of floor coverings (carpets, floor panels, parquets) • economic heat management • lack of dirt and allergens • lack of moisture and mold on walls • optimum humidity of the air without additional humidifiers



Savings in time and money at the stage of assembly:

minimization of construction waste • no specialized equipment and transport required • any finishing of walls - elimination of the plastering stage



Benefits at the stage of operation:

reduction of air temperature by a few degrees in each room, while maintaining thermal comfort, which reduces the demand on thermal power by up to 24% per year • lower consumption of energy, even by 15%, which is due to the small amount of water supplied to the collector

Why are we sure of your satisfaction?

Because our innovative solution has been tested in every respect.

WE GUARANTEE:

- ☑ reliability
- ☑ efficiency
- ☑ safety
- ☑ savings
- ☑ positive impact on health and well-being



Why are we different from other heating technologies?

We are a countrywide manufacturer and we represent Polish quality.

Our system is distinguished by a very low thermal inertia. The panel immediately adjusts to changes in weather and heats only when it is necessary.

Minimum volume of water which needs to be heated allows to achieve the required temperature in the room faster.

Simplicity of Soffio panels allows to use a cheap control system and eliminates the necessity to install expensive multi passage

valves. And what is most important, Soffio system can be installed not only in newly constructed buildings but also in rooms being modernized or renovated.

How does the heat radiation of Soffio panels work?

Soffio wall heating panels are a modern source of thermal radiation and they work similarly to the sun's rays falling on the skin.

On a frosty day on a mountain slope, although thermometers indicate a temperature below zero, the sun gives a pleasant sensation of warmth. The same phenomenon occurs in the case of our heating system.

Polish quality tailored to your needs.

Soffio heating panels are a perfect solution in:

traditional construction (housing and commercial) • modern structures (skeletal, gravelite houses) • modernized buildings • renovated buildings

Soffio heating panels can be connected to every source of heat:

in low-temperature systems (heating pumps, solar modules, electric furnaces, gas furnaces) • in high-temperature systems - solid fuel boilers (coal, wood, ecological fuel)

Construction of the Soffio heating panel

Soffio wall heating panel consists of:

1 A COLLECTOR

It transfers heat from the water circuit to a substance locked in the plasterboard system.

2 PLATE WITH RADIATION ELEMENTS

The heat absorbed from the collector, using the phenomenon of phase transition, is transferred to the entire surface of the plate.

The back of the plate is additionally insulated with a radiant screen, consisting of three layers: **a** paper, **b** aluminum foil, **a** paper.

The heating element has been built into plasterboard with standard dimensions:

***2040 x 600 x 12,5 mm.**

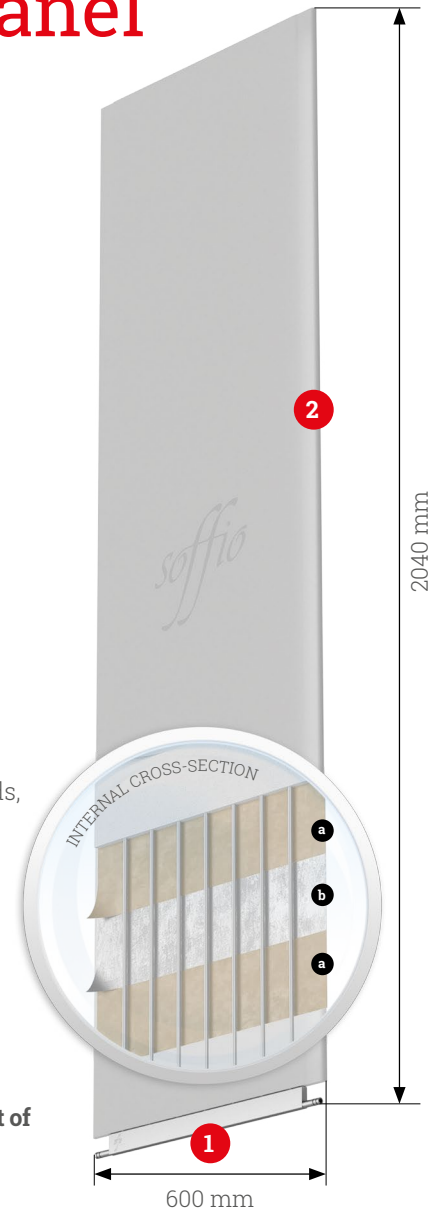
This allows to adjust the Soffio wall heating panels to every structure, made of plasterboards, which minimizes the costs of finishing walls surfaces and does not generate construction wastes.

The water circuit is limited only to the lower part of a collector, thanks to which we were able to minimize the volume of water in the system up to the level of 33 ml per one panel.

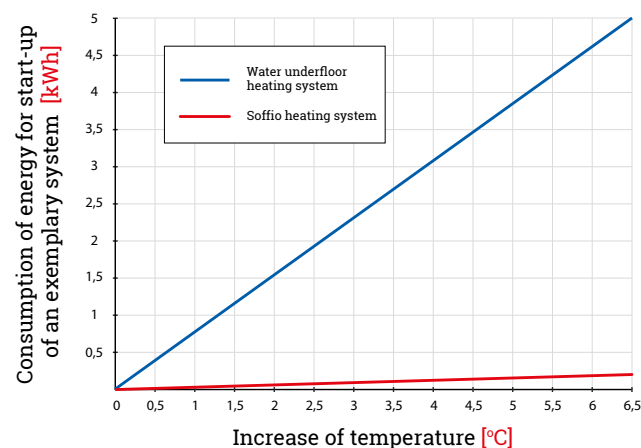
The heating capacity of one panel **exceeds 200 W**, which is sufficient to heat a surface of 3 m².

Soffio panels are also available for installation under windows in a version for self-adjustment of height from 750 mm to 1240 mm.

*dimensions of the plasterboard 2000 mm + 40 mm the height of the collector



See how **you will save**



Heating parameters of the wall panel

Heat power demand	1 panel per 2 m ² of surface area 1 panel per 5 m ³ of cubic volume		1 panel per 3 m ² of surface area 1 panel per 7.5 m ³ of cubic volume	
	Flow temperature	Heat power	Flow temperature	Heat power
Energy efficient building (20-30 W/m ² ; 8-12 W/m ³)	38-45 °C	60-90 W	45-55 °C	90-135 W
Thermally insulated building (40 W/m ² ; 16 W/m ³)	55 °C	135 W	65 °C	180 W
Other buildings (50 W/m ² ; 20 W/m ³)	60 °C	160 W	75 °C	230 W

Assembly in three simple steps!



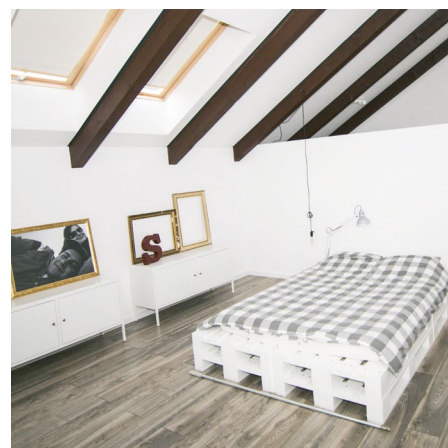
Step 1

We mount Soffio wall heating panels using screws to the structure of the support frame or directly to the wall using a gypsum adhesive.



Step 2

We connect collectors with the water circuit, connecting panels in series into one loop for one room.



Step 3

We finish the wall in any manner, painting, applying decorative plasters or wallpapers. Preparing the plaster surface is not necessary.



To join the Soffio panels, commercially available push-fit couplers can be used. Collectors of adjacent panels should be joined with two-sided couplers, while the connection with the water installation should be made with the use of a one-sided adapter coupler, finished with a standard 1/2" male thread.

We can install panels at every stage of finishing or renovation works on load-bearing walls, partition walls as well as on sloping surfaces of the attic.

We hide collectors in a screed or we place them at floor level, covering with baseboards.

Kontakt



We provide a
30 YEAR WARRANTY
on our product!

soffio

SOFFIO Sp. z o.o.

ul. Juliusza Słowackiego 33
43-502 Czechowice-Dziedzice
Poland

Office

Phone +48 787 274 304
e-mail: soffio@soffio.co.uk

Sales Department

Phone +48 787 274 300
e-mail: sales@soffio.co.uk



This folder does not constitute an offer within the meaning of the Civil Code in force in the Republic of Poland after 3 November 2016.

www.soffio.co.uk